

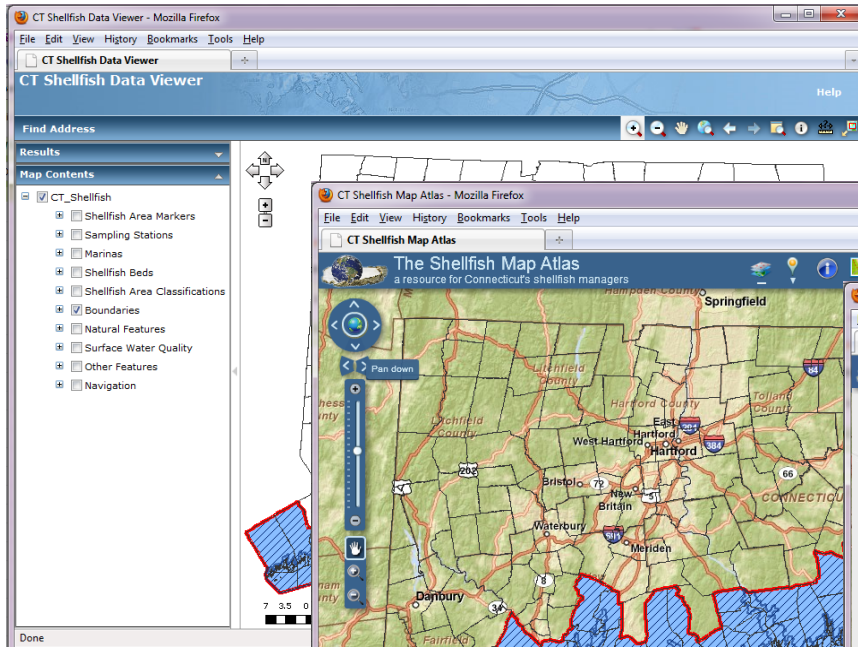
# Updates to the Aquaculture Mapping Atlas

Cary Chadwick

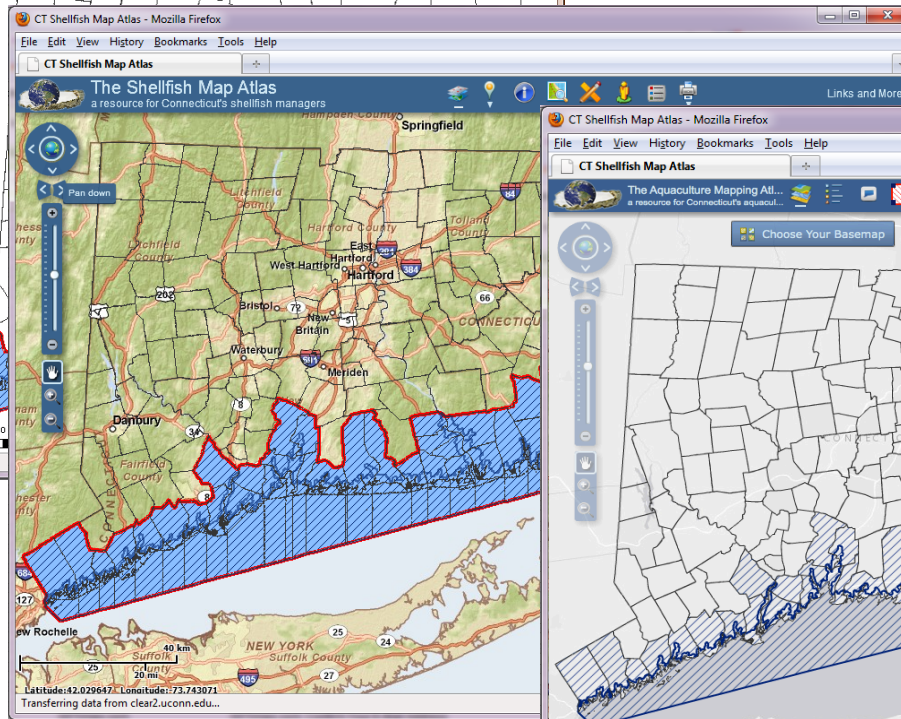
Center for Land Use Education and Research (CLEAR)

University of Connecticut

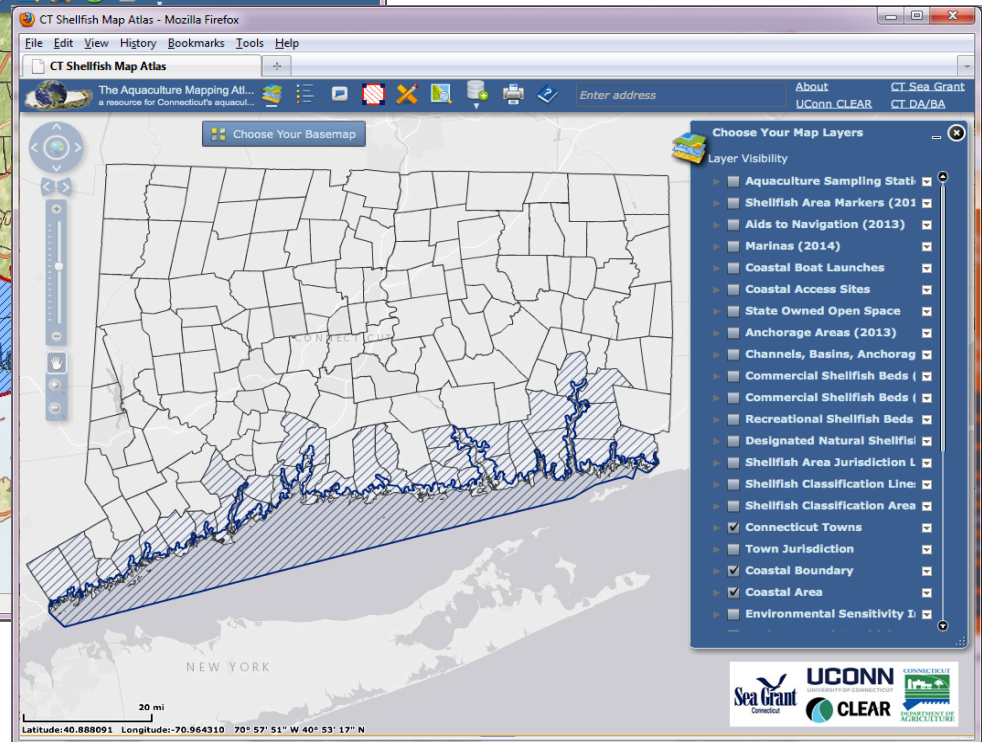
# Third Version of the Mapper



2008



2011



2015

<http://clear3.uconn.edu/aquaculture/>

# Atlas Overview

## Data:

- Shellfish sampling stations
- Shellfish area classifications
- Shellfish beds (commercial municipal, commercial state, designated natural beds, recreational beds)
- Shellfish area markers (signs, landmarks, navigation aids)
- Channels, basins and anchorage areas
- Marinas
- Coastal boat launches and access areas
- State Owned Open Space
- Jurisdiction lines
- Eelgrass beds (2009, 2012)
- Environmental Sensitivity Index (ESI) features
- Critical Coastal Habitats
- Estuarine Marine Wetlands
- Waterfowl Habitat
- Natural Diversity Database Areas
- Commercial Fishery Vessel Density
- LIS Surficial sediments
- Sewage treatment plants
- Underwater utility cables
- Nautical charts
- Bathymetry and depth soundings
- Base maps and multiple dates of aerial imagery

Lots of new and updated data!

# Atlas Overview: Functions

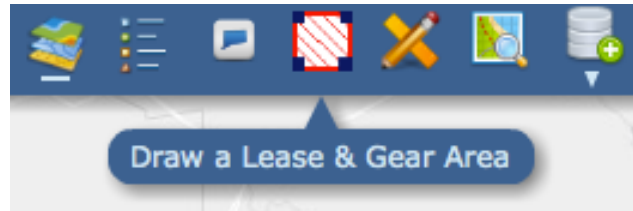
## Functions:

- Full control over layer visibility and basemaps
- Enhanced layer functions including transparency settings and ability to change drawing order\*
- Navigation tools
- Locator tools – address search and town locator
- Improved “point and click” feature identify function\*
- Compare layers tool\*
- Draw tool
- Measure tool
- Data Attribute Table\*
- Import Data Tools for shapefiles and CSV\*
- Improved Print format & Save functions\*
- Add Lease/Gear Area tool\*



\*new tools!

# Add Lease/Gear Area



**Draw a Lease & Gear Area**

Enter the coordinates

Coordinate Input Type: Decimal Degrees

Longitude (X) \* -72.951660

Latitude (Y) \* 41.241909

Locate Clear Finish Area

**Draw a Lease & Gear Area**

Enter the coordinates

Coordinate Input Type: Decimal Degrees

Longitude (X) \* -72.951660

Latitude (Y) \* 41.241909

Locate Clear Finish Area

Locations found: 4

- Coordinate 1**  
Long: -72.9654, Lat: 41.19765
- Coordinate 2**  
Long: -72.97283, Lat: 41.21948
- Coordinate 3**  
Long: -72.93261, Lat: 41.22181
- Coordinate 4**  
Long: -72.91206, Lat: 41.19340

The dialog box is overlaid on a map showing a shaded quadrilateral area defined by four blue pushpins. The text "New Haven Harbor" is visible on the map.

Thanks Aaron!



# Add Lease/Gear Area

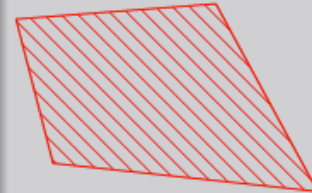
**Choose your Area Type** ✕

Lease Area    Gear Area

**Draw a Lease & Gear Area**

**Polygon 1 = Lease Area**  
 Area = 2,673.76 acres  
 Shellfish Classification = Conditionally Approved

Clear Area    Export Area    Import Area



Send to printer or Print to PDF

**Draw a Lease & Gear Area**

Please Fill in the Required Information, then Preview

Application Figure:

Author:

Lease Number:

Waterbody:

Town/State:

Federal Channel(s):

Closest Landmark:

Preview    Clear

Print    Print Preview

**Figure 1**  
 Name - John Smith  
 Lease ID - 12345

**Figure 1**  
 Name - John Smith  
 Lease ID - 12345

Federal Channel(s) - Channel X  
 Closest Landmark - 200 feet

Printed: Jan 26, 2015

# Still a Work In Progress

- Updated User Guide
- More Help Info for Add Lease/Gear Area tool is coming soon
- Your feedback is helpful!